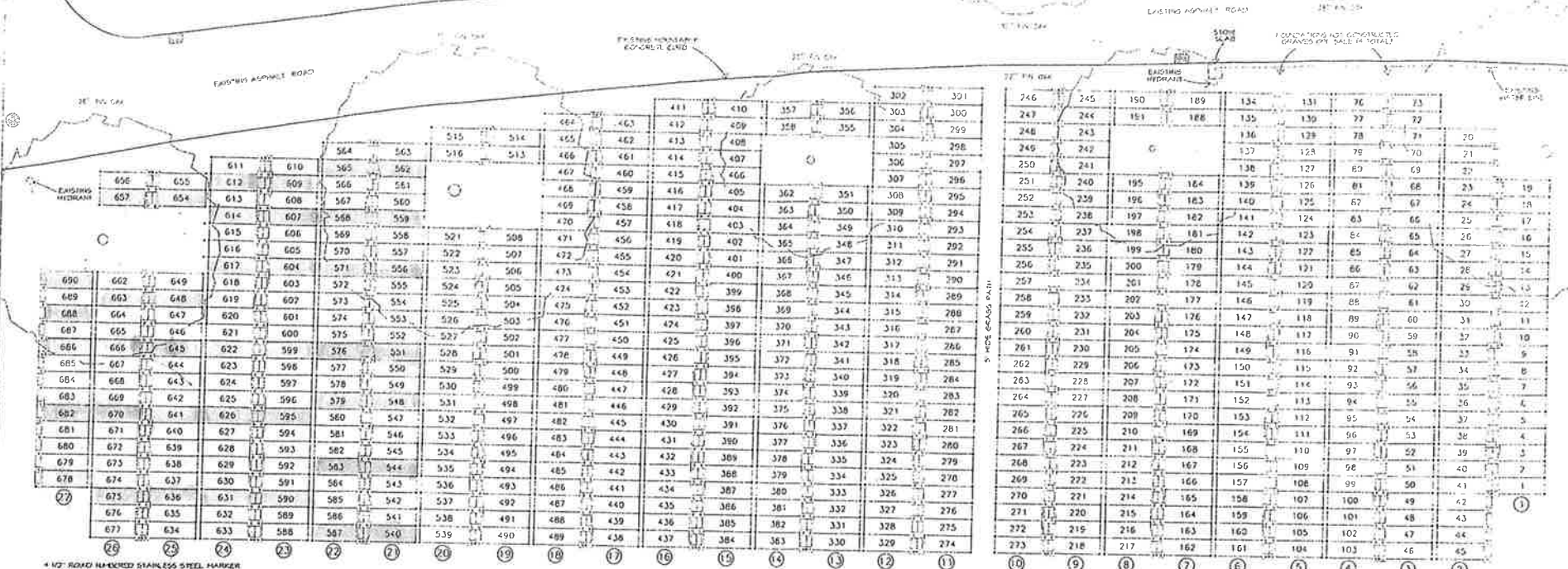


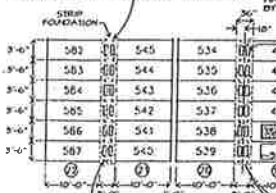
SACRED HEARTS OF JESUS AND MARY SECTION ASCENSION CEMETERY AIRMONT, NY

EXISTING
SECTION 2

SECTION 13



4 1/2" ROUND HEMMED STAINLESS STEEL MARKER WITH 6" GALVANIZED STEEL CARTRIDGE BOLT SET FLUSH IN FOUNDATION (SEE ENLARGEMENT) BY HOLLOW AND SUPPLY. BE MARKERS TO BE FINISHED BY OWNER AND SET IN CONCRETE BY CONTRACTOR AS SHOWN UPPER LEFT CORNER OF EACH GRAVE.



4 1/2" ROUND BLANK STAINLESS STEEL MARKER WITH 6" GALVANIZED STEEL CARTRIDGE BOLT SET FLUSH IN FOUNDATION (SEE ENLARGEMENT) HOLLOW AND SUPPLY. BE MARKERS TO BE FINISHED BY OWNER AND SET IN CONCRETE BY CONTRACTOR AS SHOWN UPPER RIGHT CORNER OF ROW IDENTIFICATION.

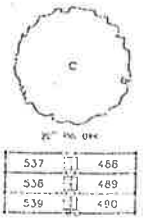
4 1/2" ROUND ROW IDENTIFICATION STAINLESS STEEL MARKER



LOT LAYOUT DETAIL
GRAVE SIZE: 3'-0" X 10'-0"
SCALE: 1" = 10'

LEGEND

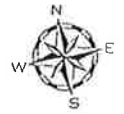
- EXISTING CATCH BASIN
- EXISTING MANHOLE
- EXISTING HYDRANT
- 4 1/2" ROUND BLANK ALUMINUM LOT CORNER MARKER LOCATION (MARKERS TO BE SET BY CONTRACTOR)
- 1 1/2" ROUND BLANK STAINLESS STEEL LOT CORNER MARKER LOCATION (MARKERS TO BE SET BY CONTRACTOR)
- 1 1/2" ROUND ROW IDENTIFICATION STAINLESS STEEL MARKER LOCATION (MARKERS TO BE SET BY CONTRACTOR)
- ROW IDENTIFICATION
- GRAVES OFF SALE DUE TO TREES (BY TOTAL)
- EXISTING TREE WITH SIZE AND DESCRIPTION
- STATUE FOUNDATION
- BACK-TO-BACK NON-VENTED GRAVES ON 30" INCH CONTINUOUS STRIP FOUNDATION



650 TOTAL GRAVES IN SECTION
PLUS 30 TOTAL GRAVES OFF-SALE
DUE TO TREES (NO FOUNDATION)

NOTES

- 1) STRIP FOUNDATIONS ARE TO BE 30" WIDE FOR BACK TO BACK MONUMENTS AND 10" WIDE FOR SINGLE MONUMENTS.
- 2) GRAVE SIZE IS 3'-0" X 10'-0".
- 3) AREA OF SECTION DESIGN IS TO ACCURATELY REPRESENT THE ACTUAL AREA.



SCALE: 1" = 10'-0"

DATE	10/11/11
SCALE	1" = 10'-0"
PROJECT	SACRED HEARTS OF JESUS AND MARY SECTION
CLIENT	GREYER & WARD, INC.
DESIGNED BY	J. G. WARD
CHECKED BY	J. G. WARD
DATE	10/11/11

GREYER & WARD, INC.
CEMETERY PLANNING
3802 N. BUFFALO STREET
ORCHARD PARK, N.Y. 14127